

MUNICIPAL PLAN  
OF THE  
TOWN OF OSHAWA

C. A. Jones  
Barrister, Solicitor,  
Notary Public, etc.

SOLICITOR FOR THE TOWN OF OSHAWA

TELEPHONE

Oshawa, Ont. Can. Mar 30 1897

Recd of Hon. Morris Esq. Assessor  
a copy of the Municipal Plan  
of Oshawa for safe keeping

*[Signature]*  
Tom Pollock

PROPERTY OF  
CREIGHTON, FRASER, DRYMAN & MURDOCH  
OSHAWA ONTARIO

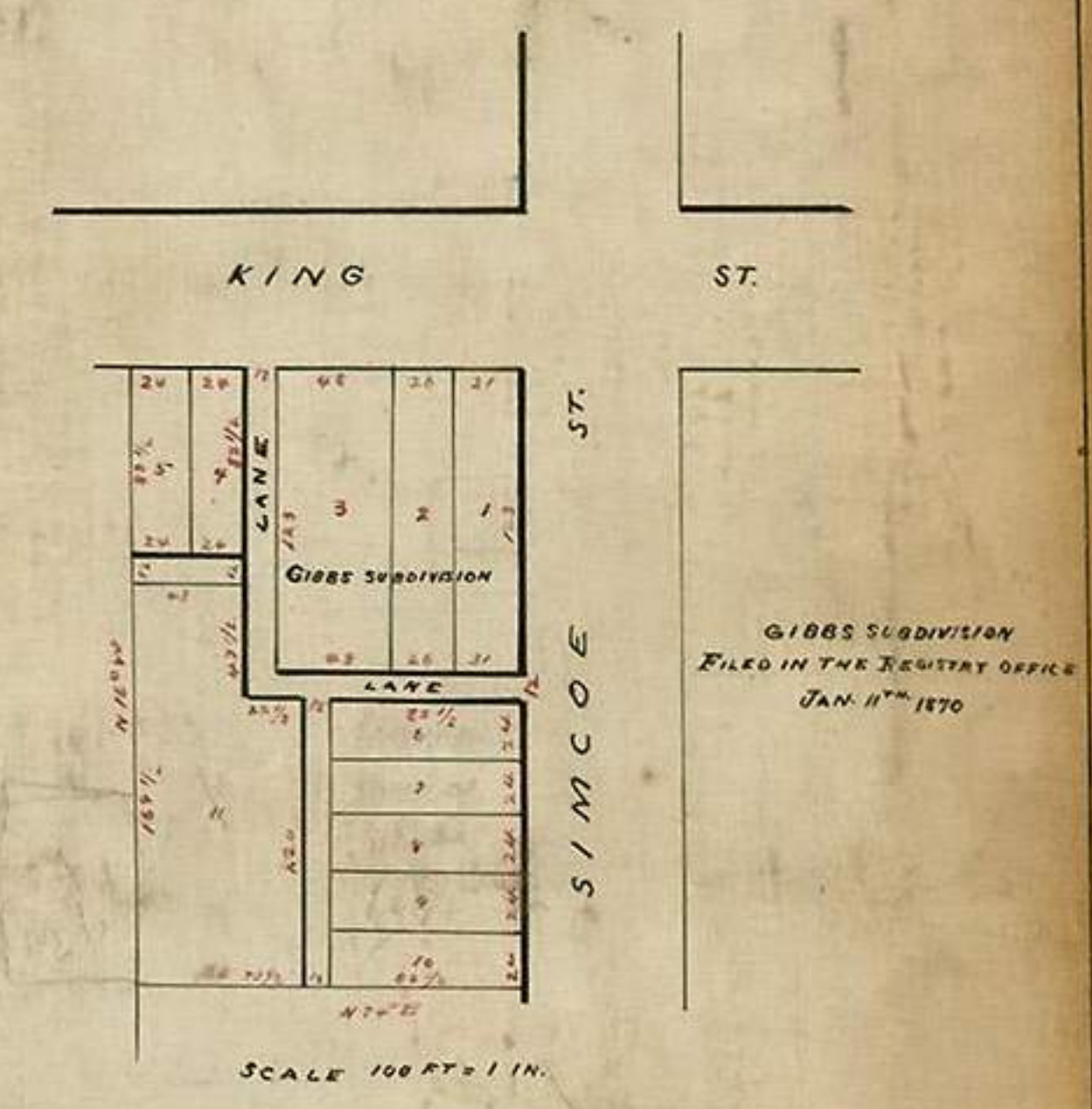
# PLAN

of lots 11 and 12 first con. of the  
tp. of east whitby now part of

# SHAWA



SCALE 4 CHAINS = 1 IN.



PLAN OF THE SUBDIVISION OF VILLAGE LOT No. 1 IN BLOCK A, SOUTH SIDE KING ST.

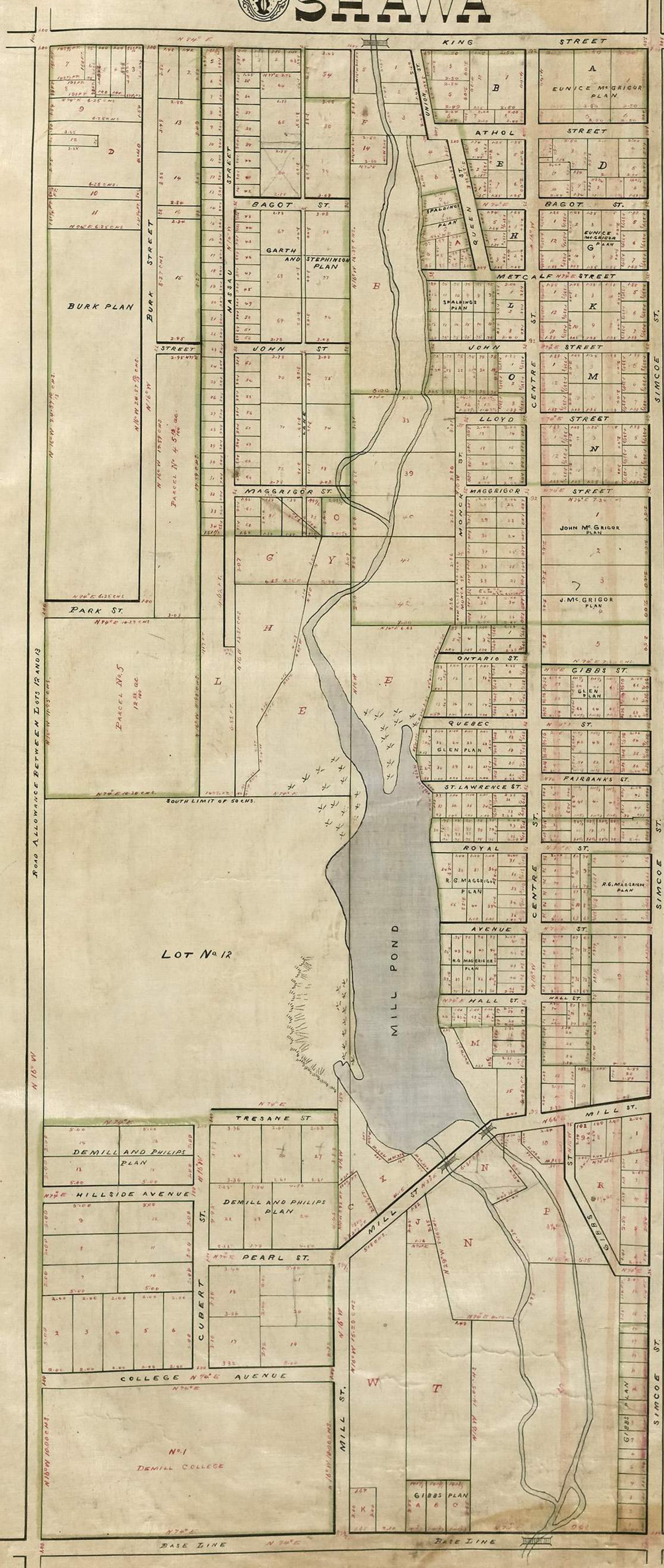
NOTE  
ALL MEASUREMENTS ARE IN CHAINS  
AND LINES EXCEPT OTHERWISE STATED

I hereby certify that this plan accurately shows the manner in which the land included therein has been surveyed and subdivided; and that the said plan is prepared in accordance with the provisions of the Registry Act 1893

Oshawa Sept. 24<sup>th</sup> 1894  
William J. Deans  
O. S. Surveyor

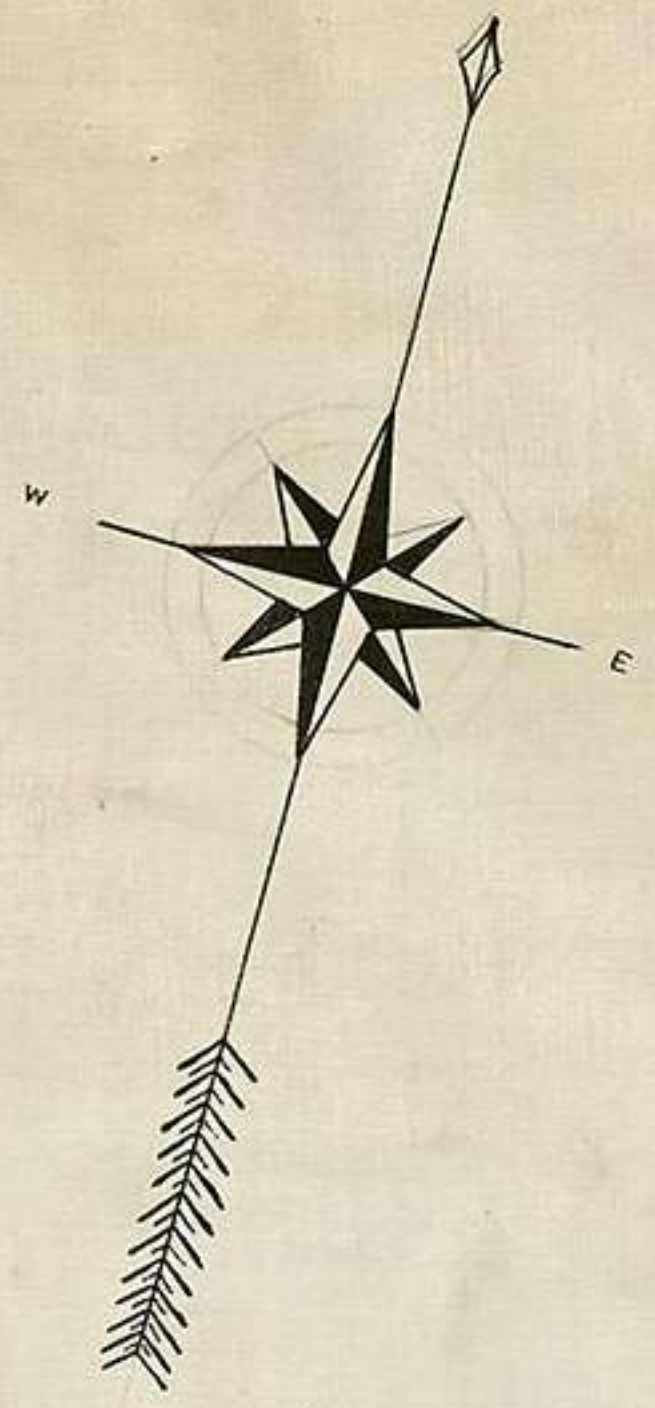
This plan is prepared according to the directions of the Municipality of the Town of Oshawa, and in accordance with the Registry Act 1893

McGowan  
Mayor of Oshawa



# PLAN

of lots 7 and 8 first con. of the tp.  
of east whitby now part of  
**OSHAWA**



SCALE 4 CHAINS = ONE INCH

I certify that this plan accurately shows the manner in which the lands included herein has been surveyed and subdivided; and that the said plan is prepared in accordance with the provisions of The Registry Act

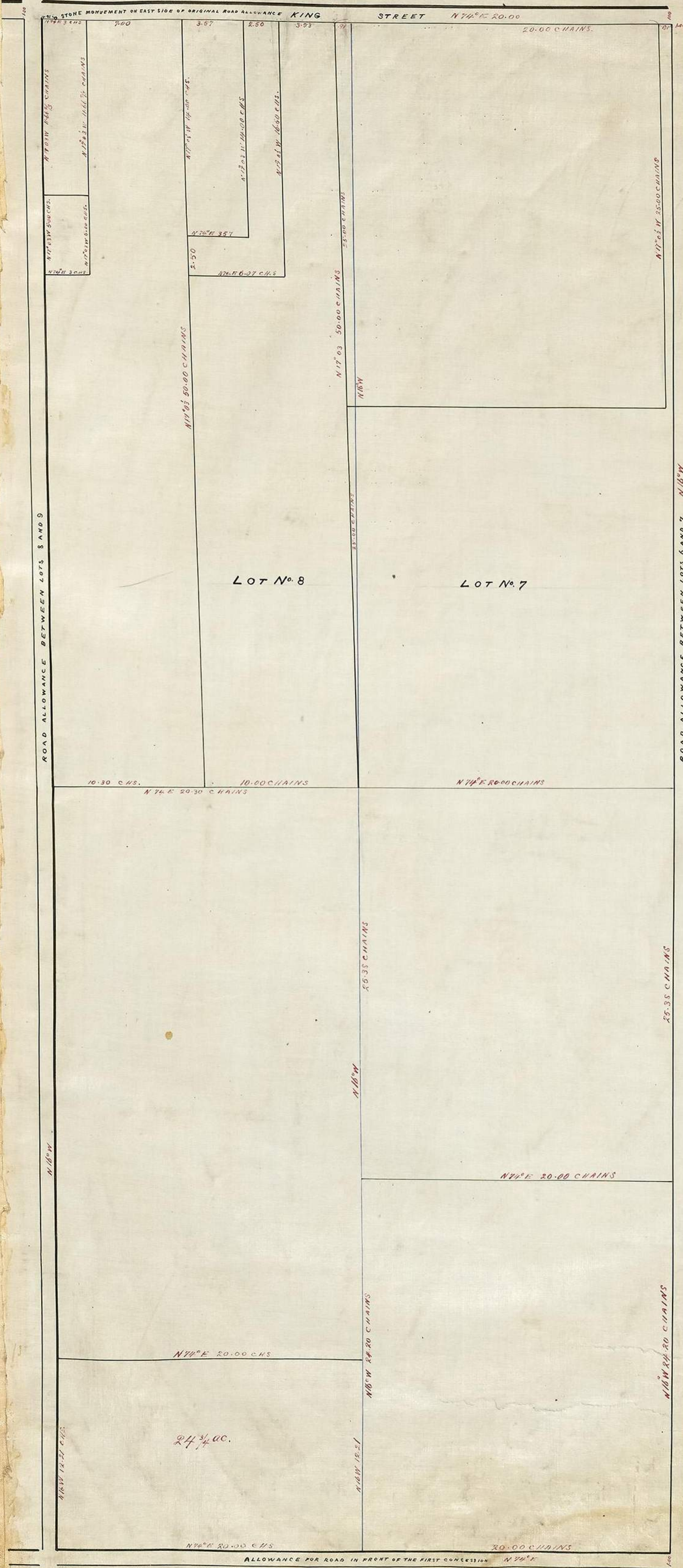
Oshawa Sept 24<sup>th</sup>  
1894

William J. Deans  
C.L. Surveyor

This plan is prepared according to the directions of the Municipality of the Town of Oshawa, and in accordance with the Registry Act 1893

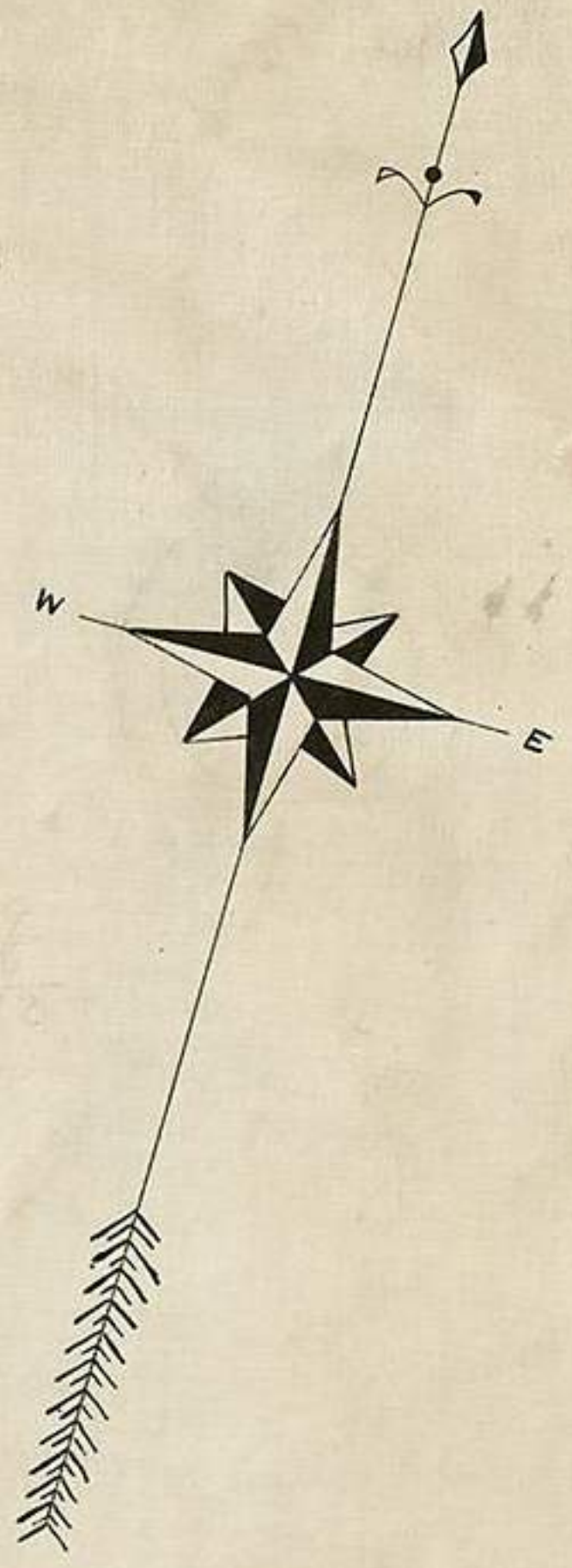
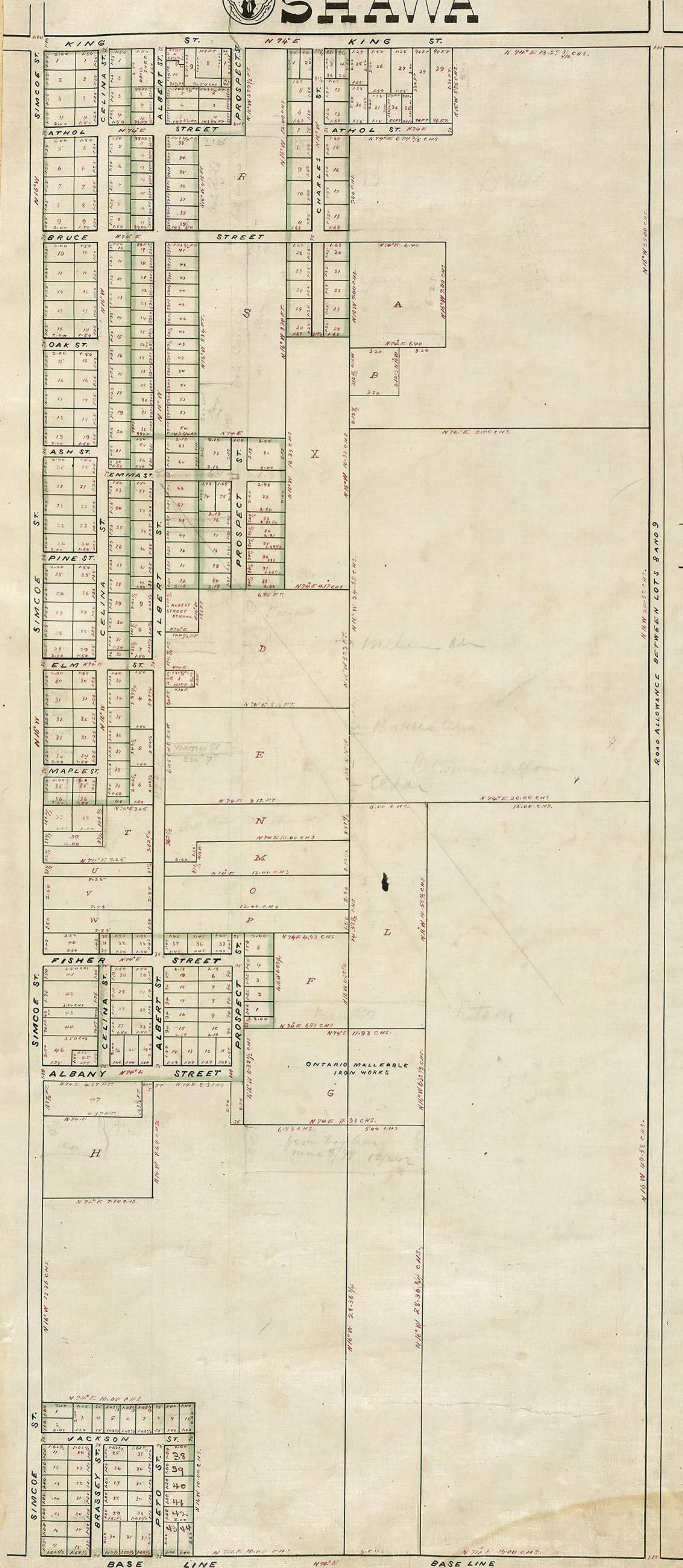
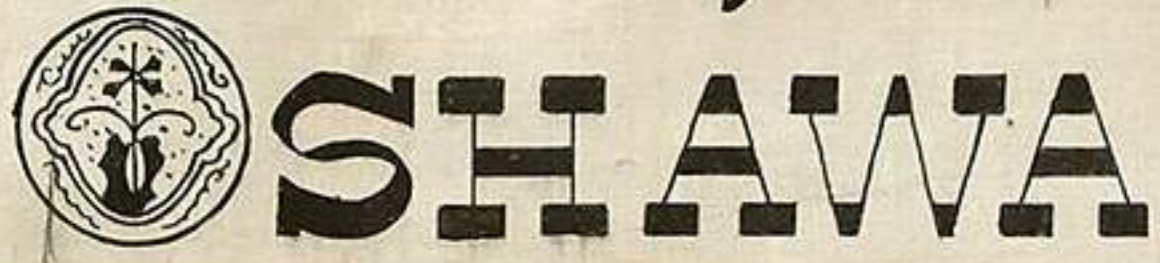
*W. J. Deans*  
Mayor  
of Oshawa

*W. J. Deans*  
Surveyor

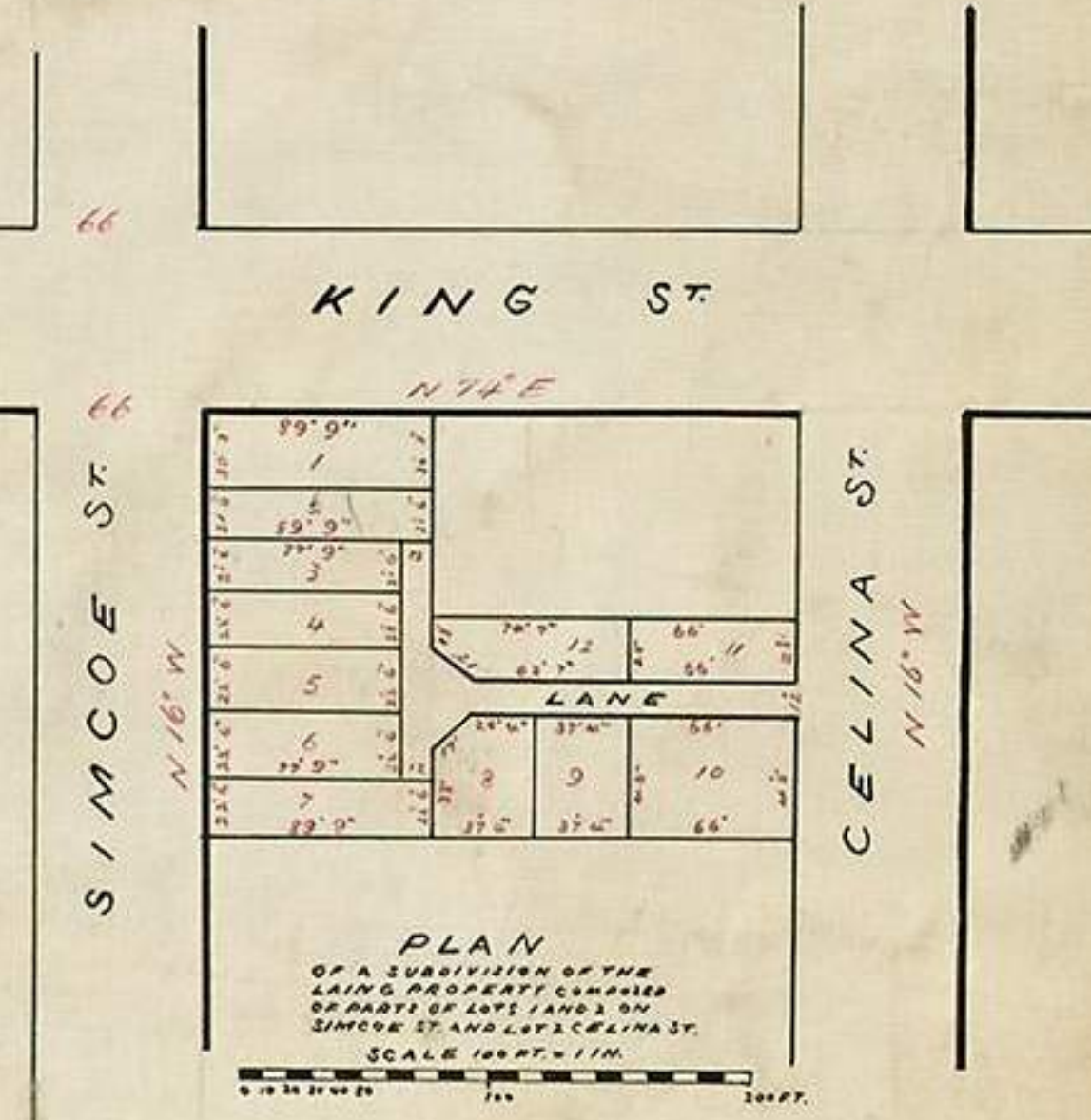


# PLAN

of lots 9 and 10 first con. of the  
tp. of east whitby now part of



SCALE 4 CHS = 1 IN



I hereby certify that this plan accurately shows the manner in which the land included herein has been surveyed and subdivided, and that the said plan is prepared in accordance with the provisions of The Registry Act 1893

Oshawa Sept 27th 1894 William J. Deans  
C. L. Surveyor

This plan is prepared according to the directions of the Municipality of the Town of Oshawa and in accordance with the Registry Act 1893  
M. Corry  
Mayor of Oshawa

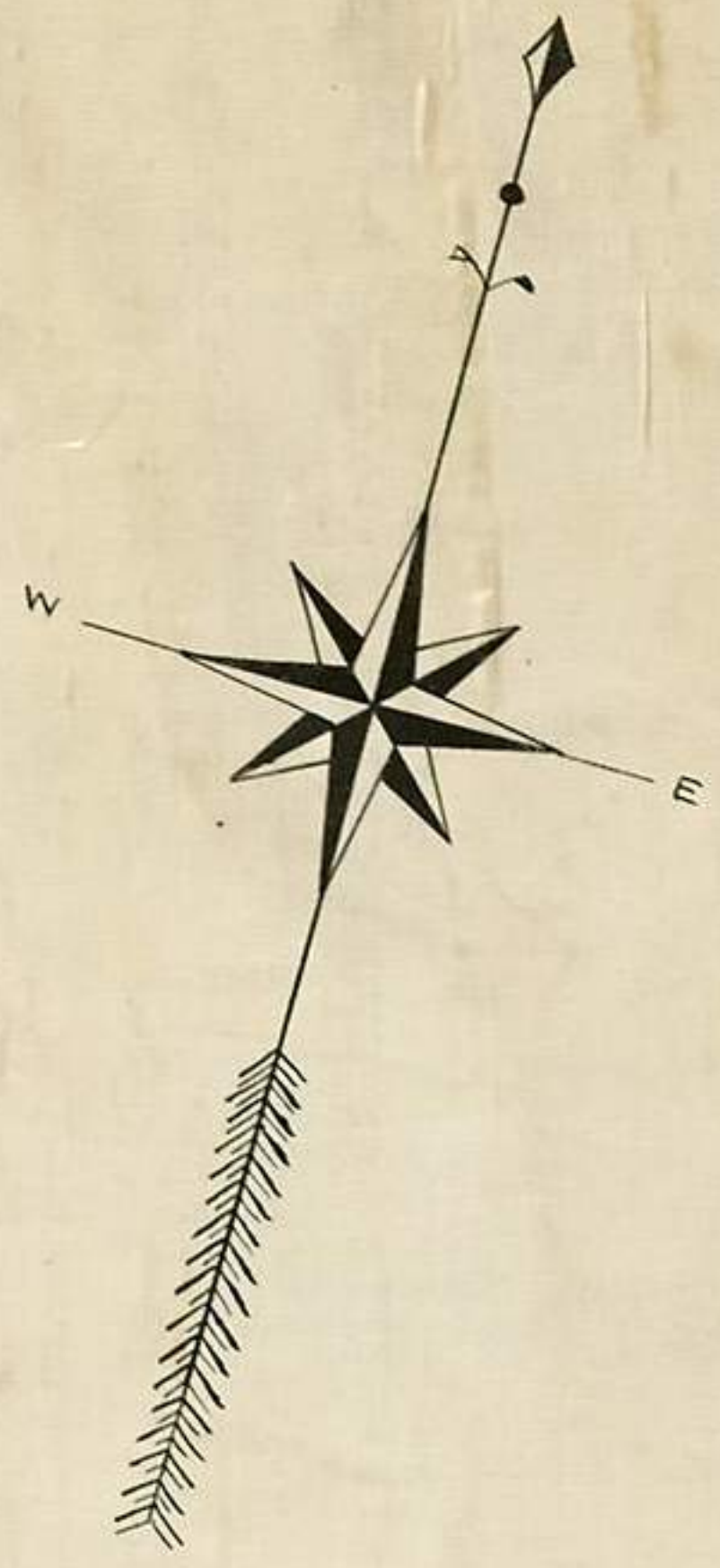
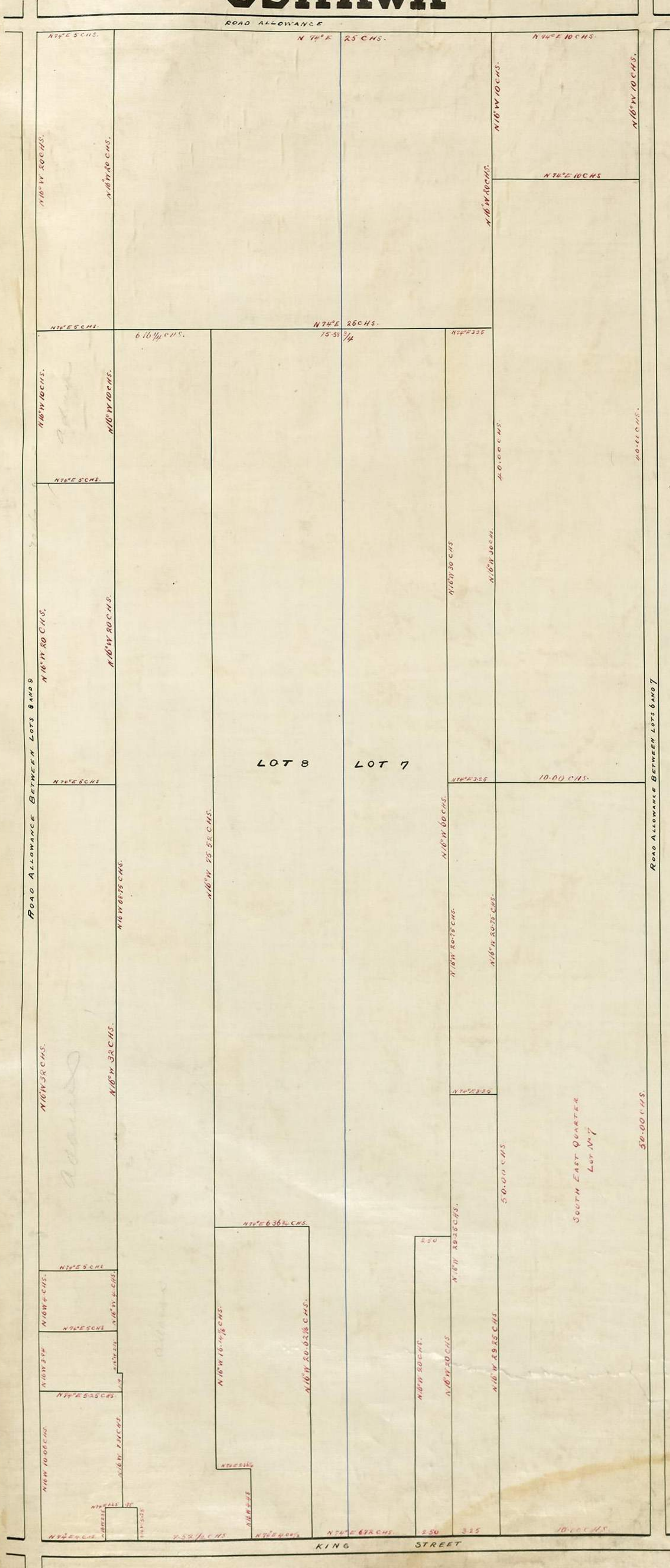
PROPERTY OF  
CRECHTON, FRASER, DRYNAN & MURDOCK  
OSHAWA  
ONTARIO

G. Smith  
Town Clerk



# PLAN

## of lots 7 and 8 second con. of the tp. of east whitby now part of **OSHAWA**



SCALE 4 CHAINS = 1 IN

*I hereby certify that this plan accurately shows the manner in which the land included therein has been surveyed and subdivided; and that the said plan is prepared in accordance with the provisions of the Registry Act.*

Oshawa Sept 24<sup>th</sup> 1894  
 William J. Deans  
 O.L. Surveyor

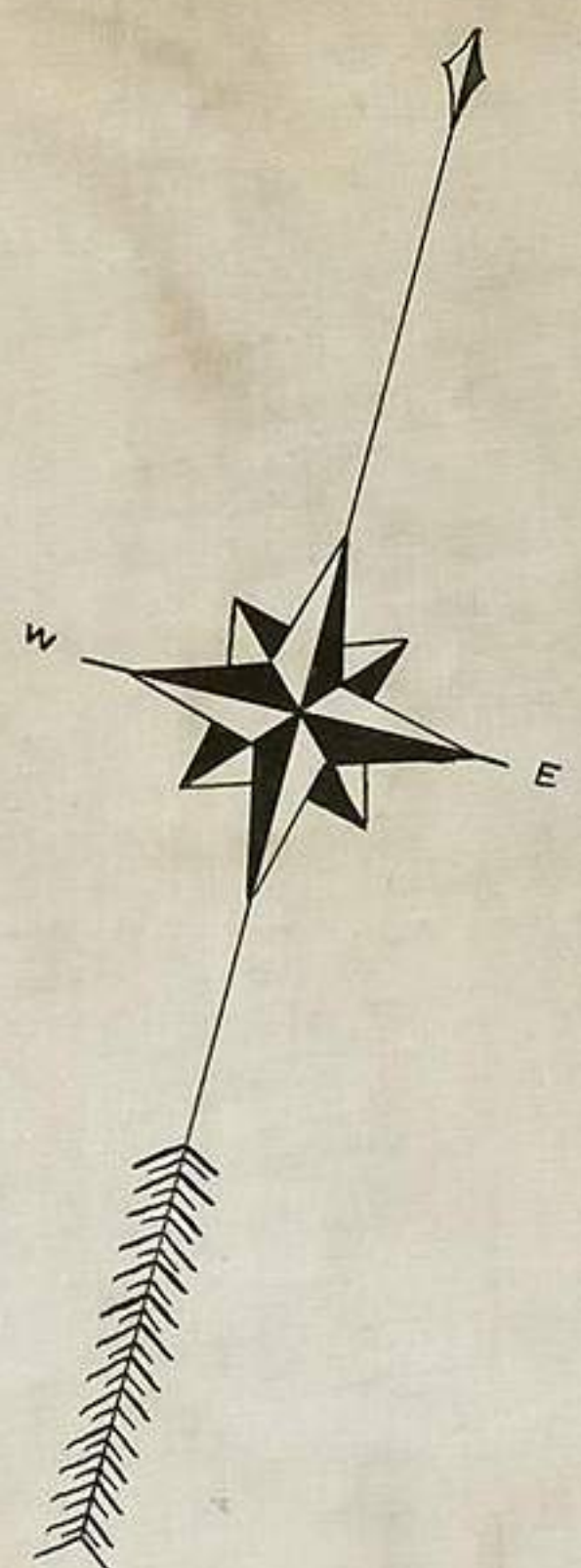
*This plan is prepared according to the directions of the Municipality of Oshawa and in accordance with the Registry Act 1893*  
 M. Menard  
 Mayor of Oshawa

*W. Smith*  
 Town Clerk



# PLAN

## of lots 9 and 10 second con of the tp. of east whitby now part of OSHAWA



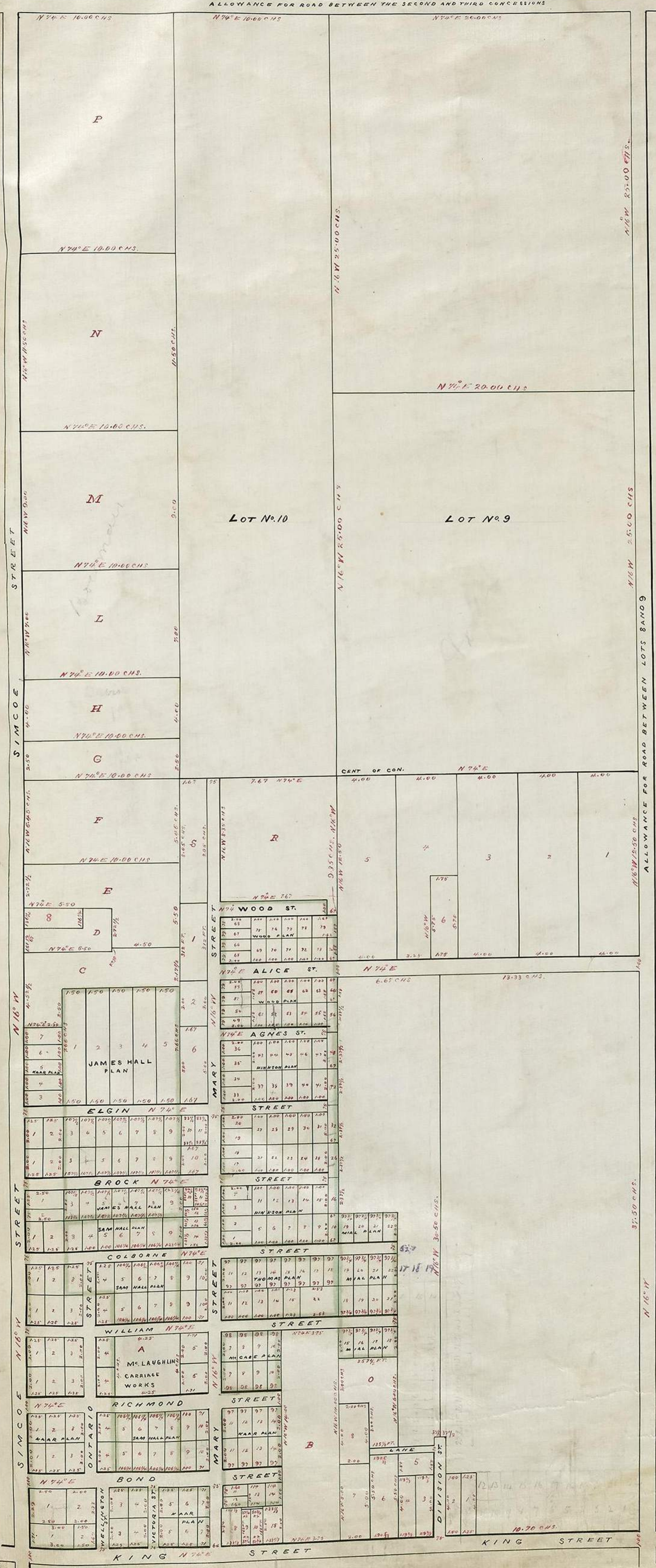
SCALE 4 CHS. = 1 IN.

I hereby certify that this plan accurately shows the manner in which the land included therein has been surveyed and subdivided; and that the said plan is prepared in accordance with the provisions of The Registry Act 1893.

Oshawa Sept 24<sup>th</sup> 1894  
 William J. Deans  
 O. L. Surveyor

This plan is prepared according to the directions of the Municipality of the Town of Oshawa and in accordance with the Registry Act 1893.  
 Mayor  
 of Oshawa

NOTE  
 ALL MEASUREMENTS ARE IN CHAINS EXCEPT WHERE OTHERWISE MARKED.



G. Smith  
 Town Clerk



# PLAN

of lots 11 and 12 second con. of the  
tp. of east whitby now part of

# SHAWA

SCALE 4 CHAINS = ONE INCH

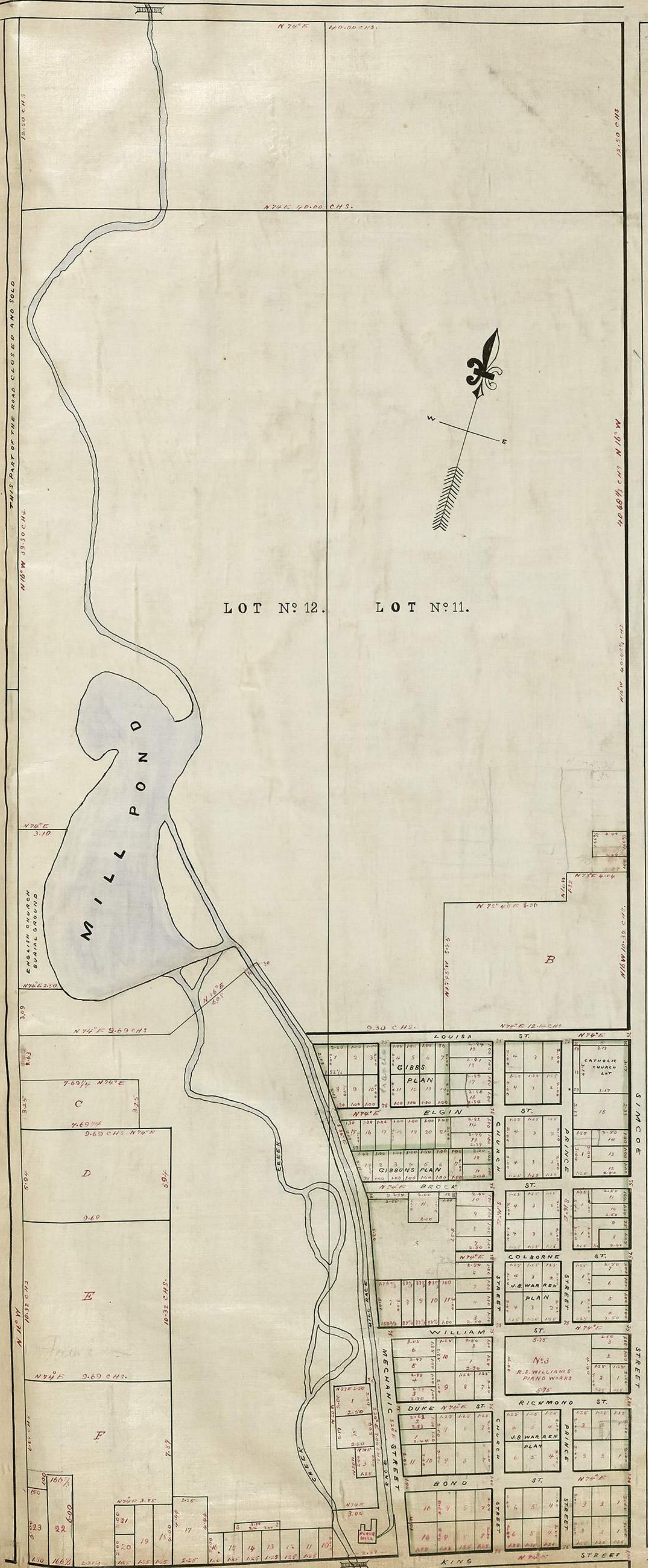
I hereby certify that this plan accurately shows  
the manner in which the land included therein  
has been surveyed and subdivided; and that the  
said plan is prepared in accordance with the  
provisions of The Registry Act, 1893

Oshawa Sept 24th  
1894

William J. Deans  
C. L. Surveyor

This plan is prepared according to the directions  
of the Municipality of the Town of Oshawa; and  
in accordance with the Registry Act 1893

W. J. Deans  
Mayor  
of Oshawa



LOT N<sup>o</sup> 12.

LOT N<sup>o</sup> 11.

Handwritten notes and calculations on the right side of the page:

152  
75  
97

82-6

148

93  
33  
126

113

105  
246

871  
42  
90

173

W. J. Deans  
Town Clerk